

How to add Packman repository on openSUSE

Author : Dan Nanni

Categories : [openSUSE](#)

Question: I would like to install a package on openSUSE, and the package is available in Packman repository only. How can I add Packman repository on openSUSE?

[Packman repository](#) is the largest external repository of openSUSE, which contains various multimedia related packages and their libraries. If you want to install video/audio related software which is not available in openSUSE official repositories, chances are that you can find them in the Packman repository.

You can **add Packman repository on openSUSE by using YaST**, an installation and configuration tool for openSUSE. Here is how you can do it.

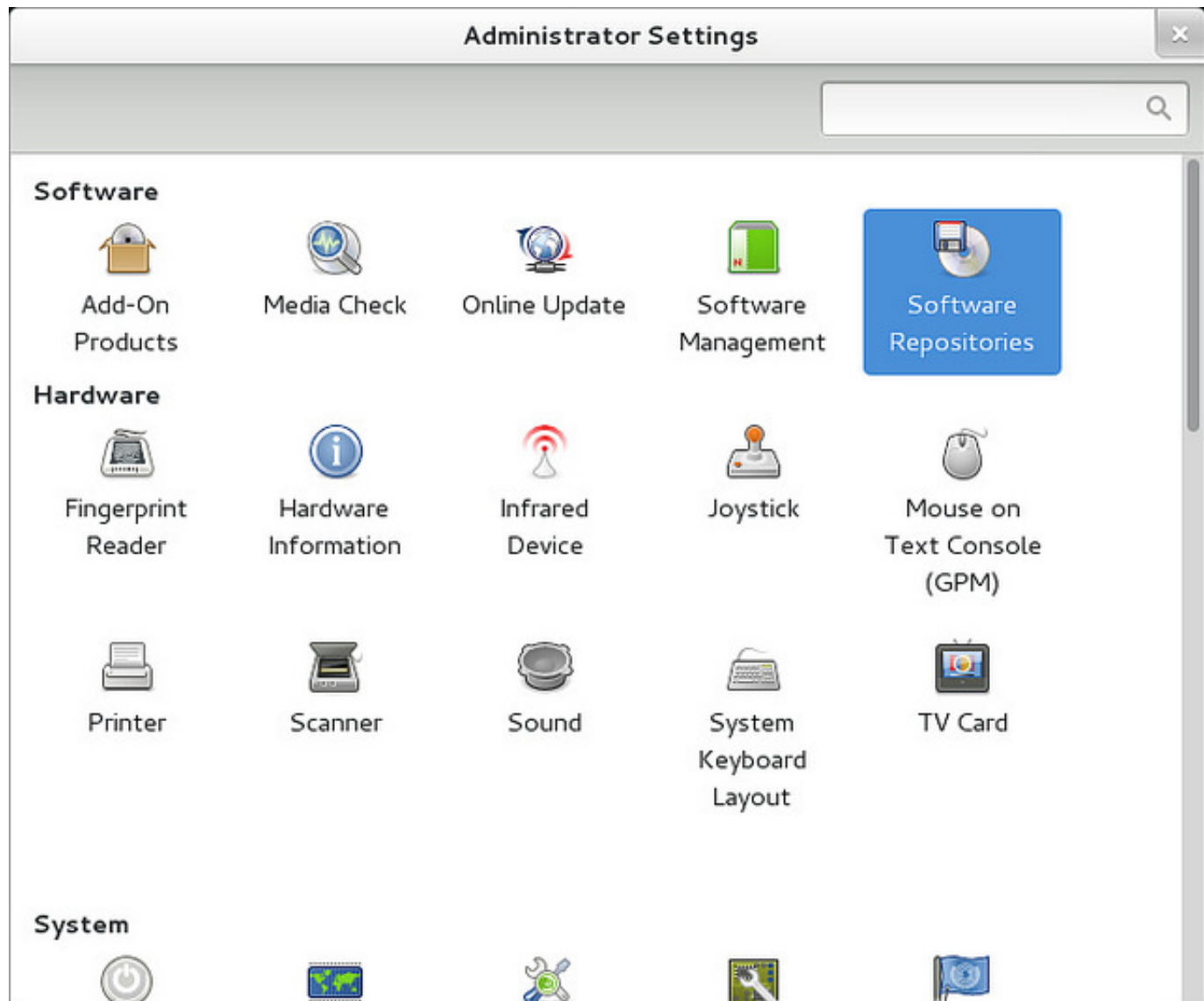
First, launch YaST by going to "System Settings" -> "YaST". You can also launch it by entering "yast" on desktop search bar.

You will see a window titled "Administrator Settings", which is a YaST window. Click on "Software Repositories" icon.

Ask Xmodulo

Find answers to commonly asked Linux questions

<http://ask.xmodulo.com>

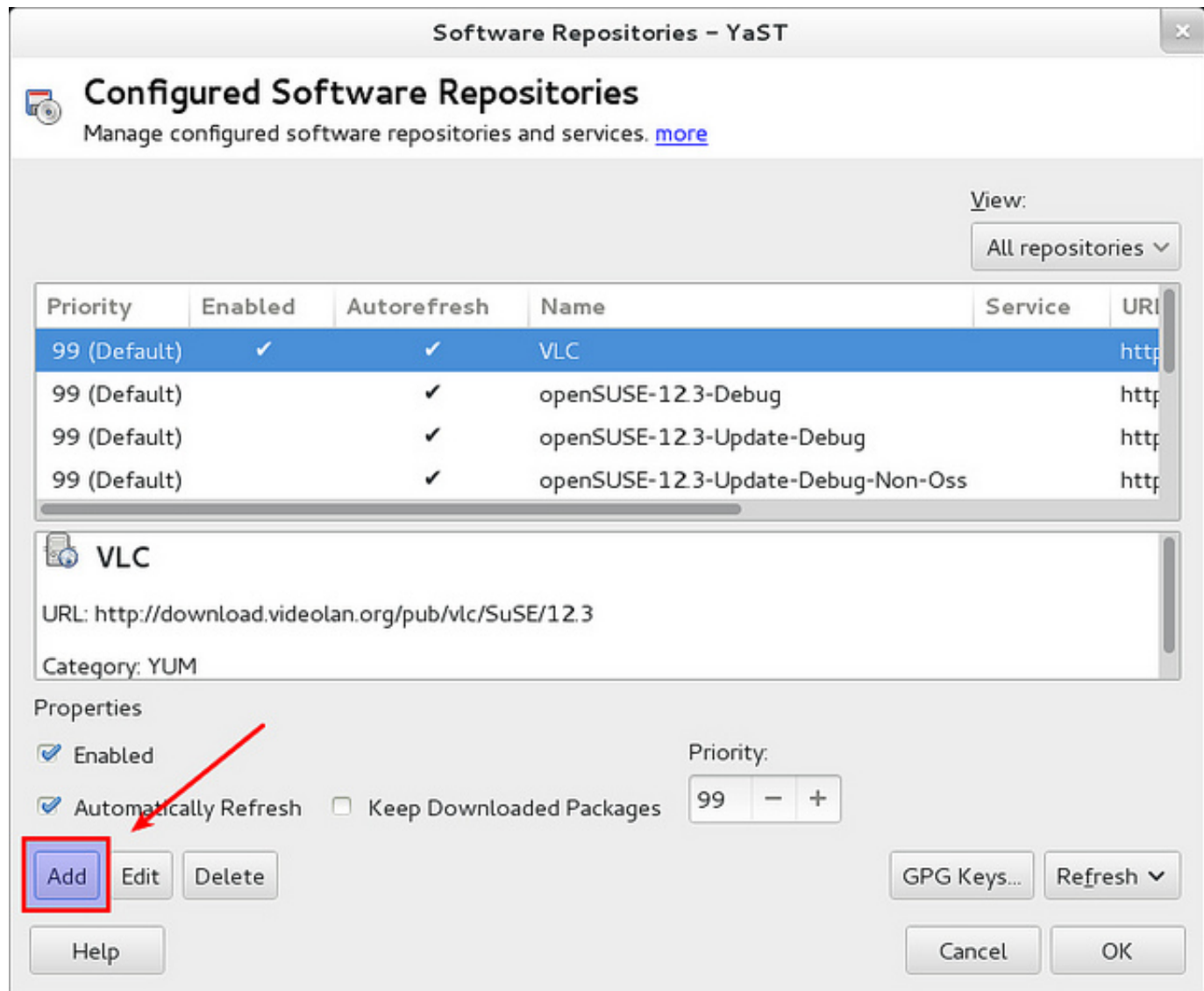


In the next window, you will see a list of configured software repositories. Click on "Add" button at the bottom.

Ask Xmodulo

Find answers to commonly asked Linux questions

<http://ask.xmodulo.com>

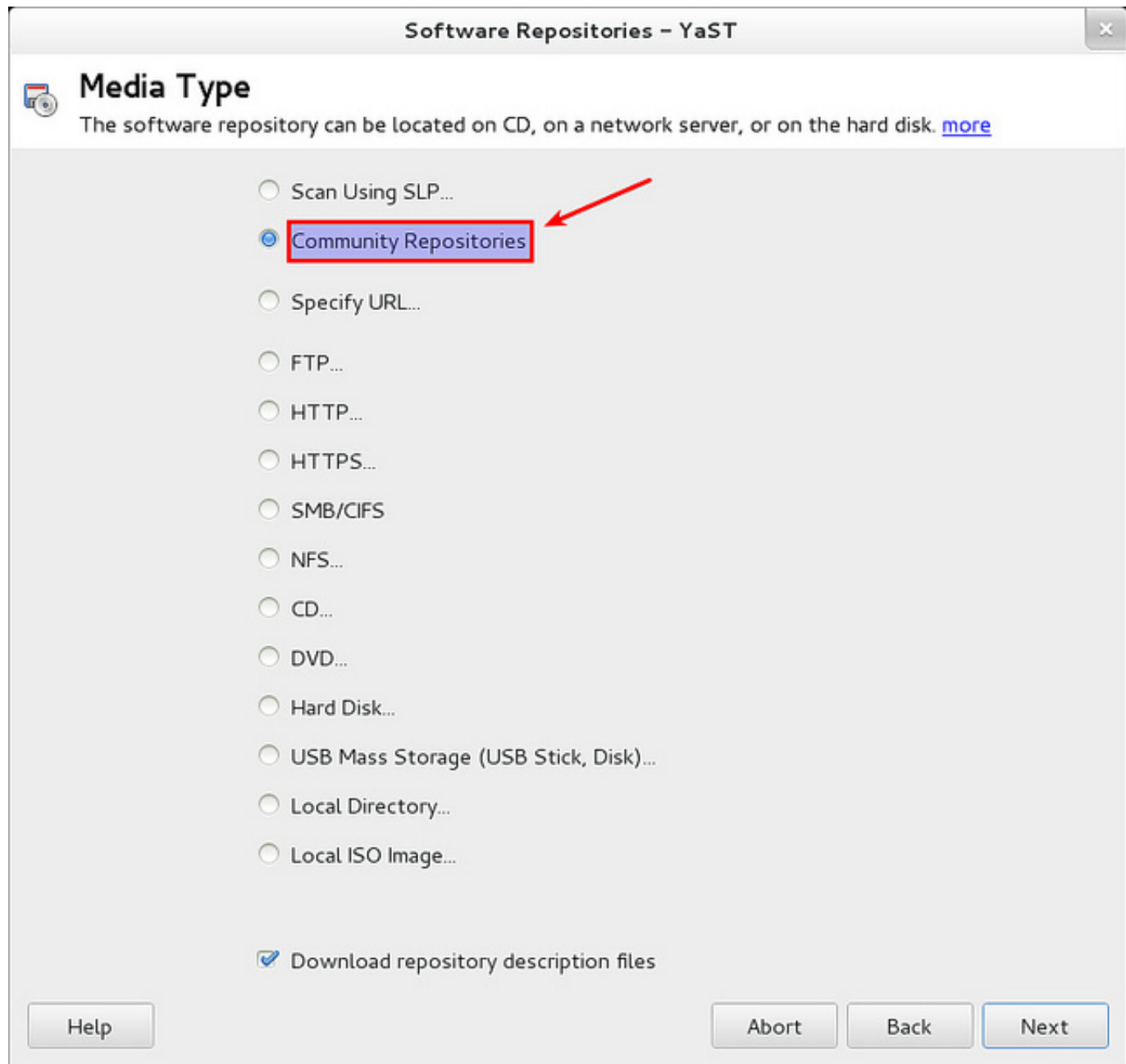


Choose "Community Repositories" as repository type.

Ask Xmodulo

Find answers to commonly asked Linux questions

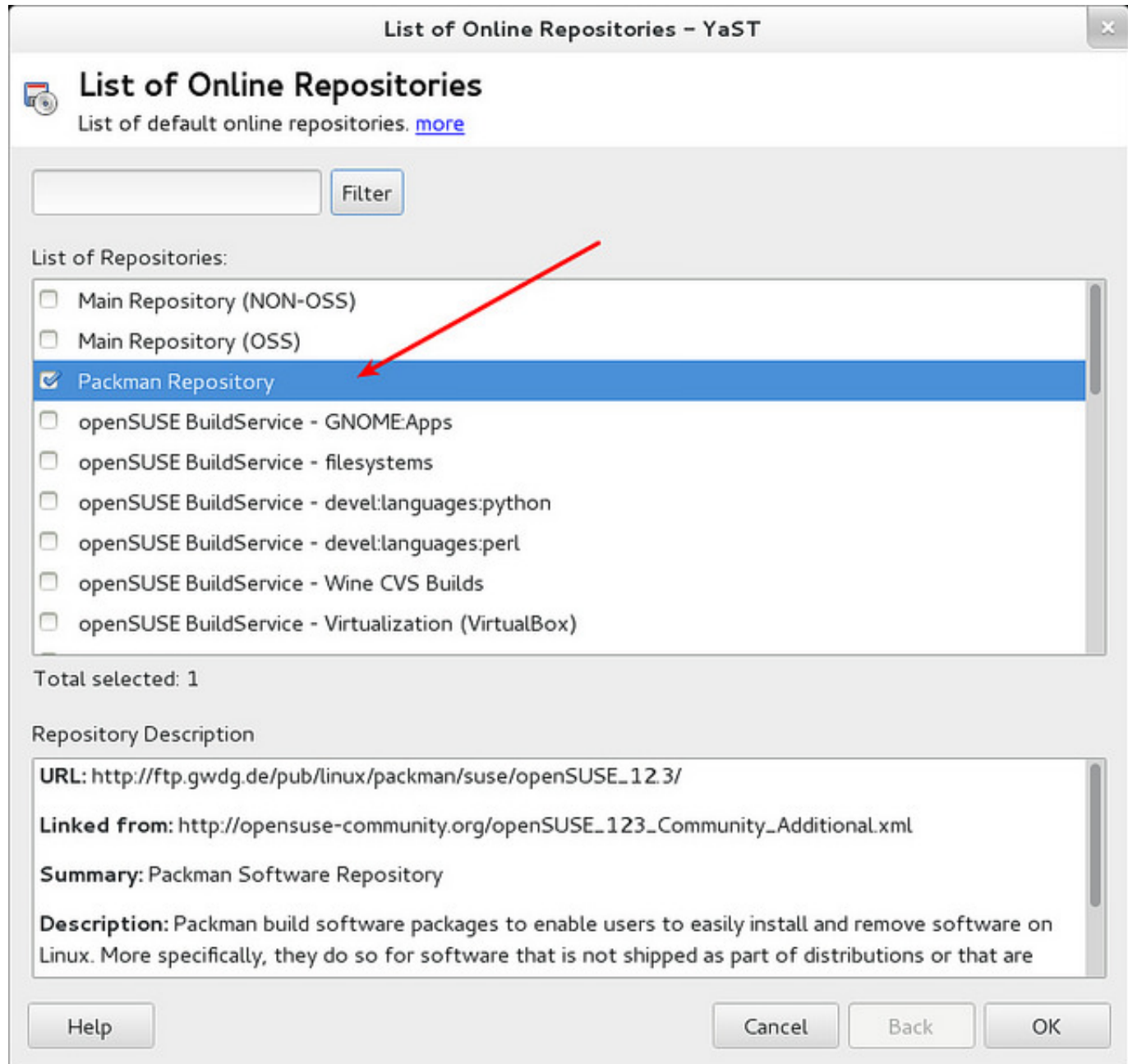
<http://ask.xmodulo.com>



Check "Packman Repository" from the list of available repositories, and click on "OK".

Ask Xmodulo

Find answers to commonly asked Linux questions
<http://ask.xmodulo.com>



If you are asked to import GnuPG key for Packman repository, simply click on "Trust" button to import the key.

Ask Xmodulo

Find answers to commonly asked Linux questions

<http://ask.xmodulo.com>

The owner of the key may distribute updates, packages, and package repositories that your system will trust and offer for installation and update without any further warning. In this way, importing the key into your keyring of trusted keys allows the key owner to have a certain amount of control over the software on your system.

A warning dialog opens for every package that is not signed by a trusted (imported) key. If you do not trust the key, the packages or repositories created by the owner of the key will not be used.

Import Untrusted GnuPG Key

The following GnuPG key has been found in repository
Packman Repository
(http://ftp.gwdg.de/pub/linux/packman/suse/openSUSE_12.3/):

ID: 45A1D0671ABD1AFB
Name: PackMan Project (signing key) <packman@links2linux.de>
Fingerprint: F887 5B88 OD51 8B6B 8C53 OD13 45A1 D067 1ABD 1AFB
Created: 09/20/2010
Expires: 09/19/2014

You can choose to import it into your keyring of trusted public keys, meaning that you trust the owner of the key. You should be sure that you can trust the owner and that the key really belongs to that owner before importing it.

After installation is completed, you should find Packman repository in the configured repository list.

Ask Xmodulo

Find answers to commonly asked Linux questions

<http://ask.xmodulo.com>

Writing List of Online Repositories - YaST

Configured Software Repositories

Manage configured software repositories and services. [more](#)

View: All repositories ▾

Priority	Enabled	Autorefresh	Name	Service	URI
99 (Default)		✓	openSUSE-12.3-Update-Debug-Non-Oss		http://
99 (Default)	✓	✓	openSUSE-12.3-Non-Oss		http://
99 (Default)	✓	✓	openSUSE-12.3-Oss		http://
99 (Default)		✓	openSUSE-12.3-Source		http://
99 (Default)	✓	✓	openSUSE-12.3-Update		http://
99 (Default)	✓	✓	openSUSE-12.3-Update-Non-Oss		http://
99 (Default)	✓	✓	Packman Repository		http://

Packman Repository

URL: http://ftp.gwdg.de/pub/linux/packman/suse/openSUSE_12.3/

Category: YUM

Properties

Enabled Priority: 99 - +

Automatically Refresh Keep Downloaded Packages

Add Edit Delete GPG Keys... Refresh ▾

Help Cancel OK