

# How to disable desktop GUI on Raspberry Pi

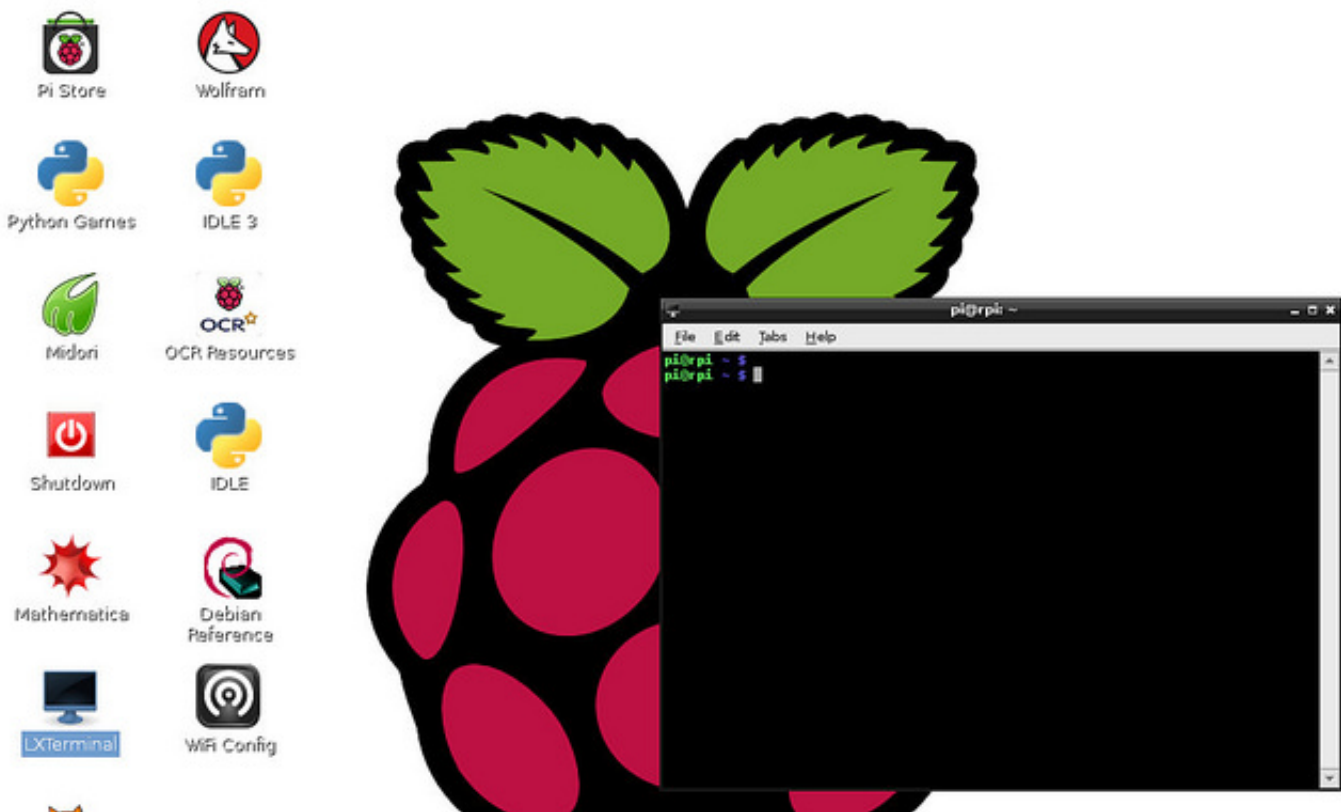
**Author :** Dan Nanni

**Categories :** [Raspberry Pi](#)

**Tagged as :** [bootingraspbian](#)

**Question:** I do not want to auto-start graphical desktop on my Raspberry Pi upon boot. How can I disable desktop GUI on Raspberry Pi?

You don't have to run desktop GUI on Raspberry Pi if you are not using Raspberry Pi interactively, but rather [remotely control](#) it from terminal or remote desktop interfaces. Besides, even the lightweight Raspberry Pi desktop environment is pretty resource-heavy on 512MB memory, so it is recommended that you turn off graphical desktop unless you really need it.



Here is a simple instruction on **how to disable desktop GUI on Raspberry Pi**.

If you are using Raspbian image on Raspberry Pi, you can use `raspi-config`, which is a Raspberry Pi configuration command-line tool. Using this tool, you can change boot options which include console booting or graphical desktop login.

## Ask Xmodulo

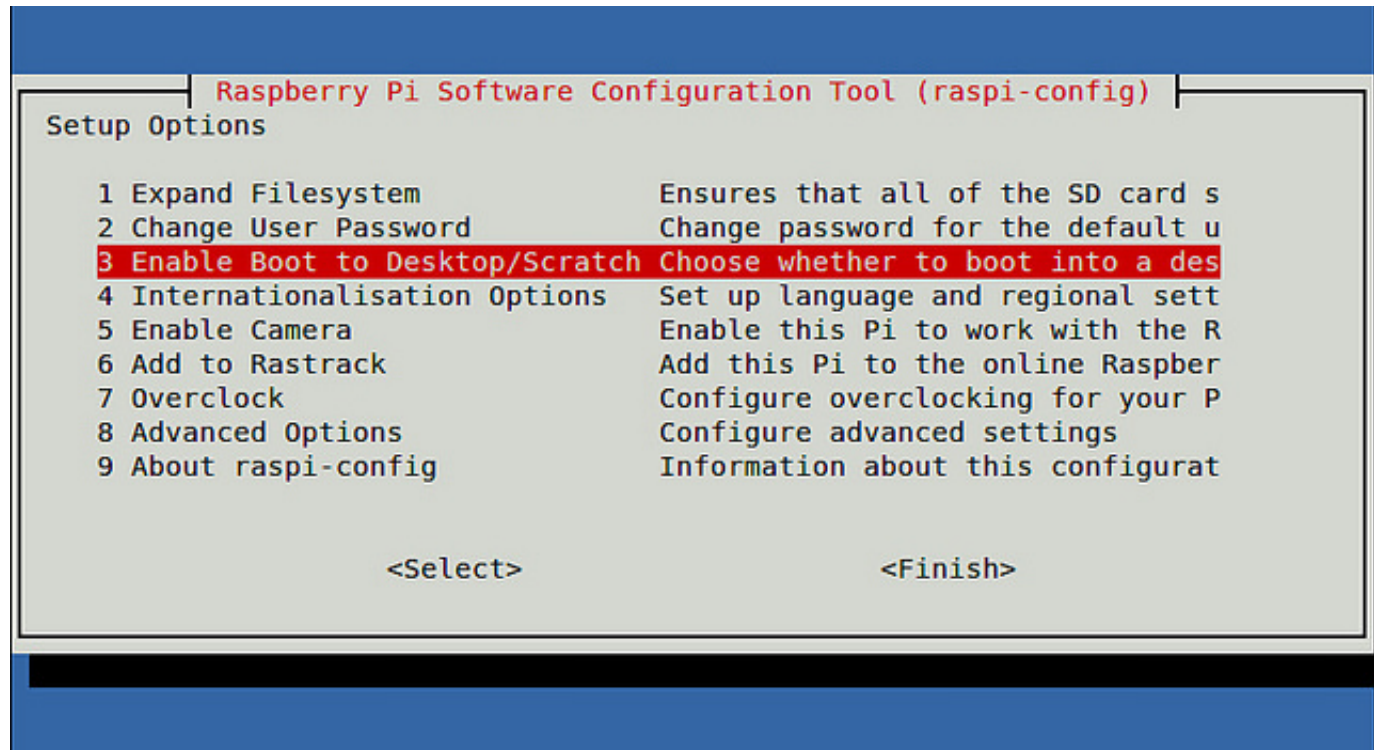
Find answers to commonly asked Linux questions  
<http://ask.xmodulo.com>

---

Launch `raspi-config` from a terminal.

```
$ sudo raspi-config
```

Choose the boot option menu.



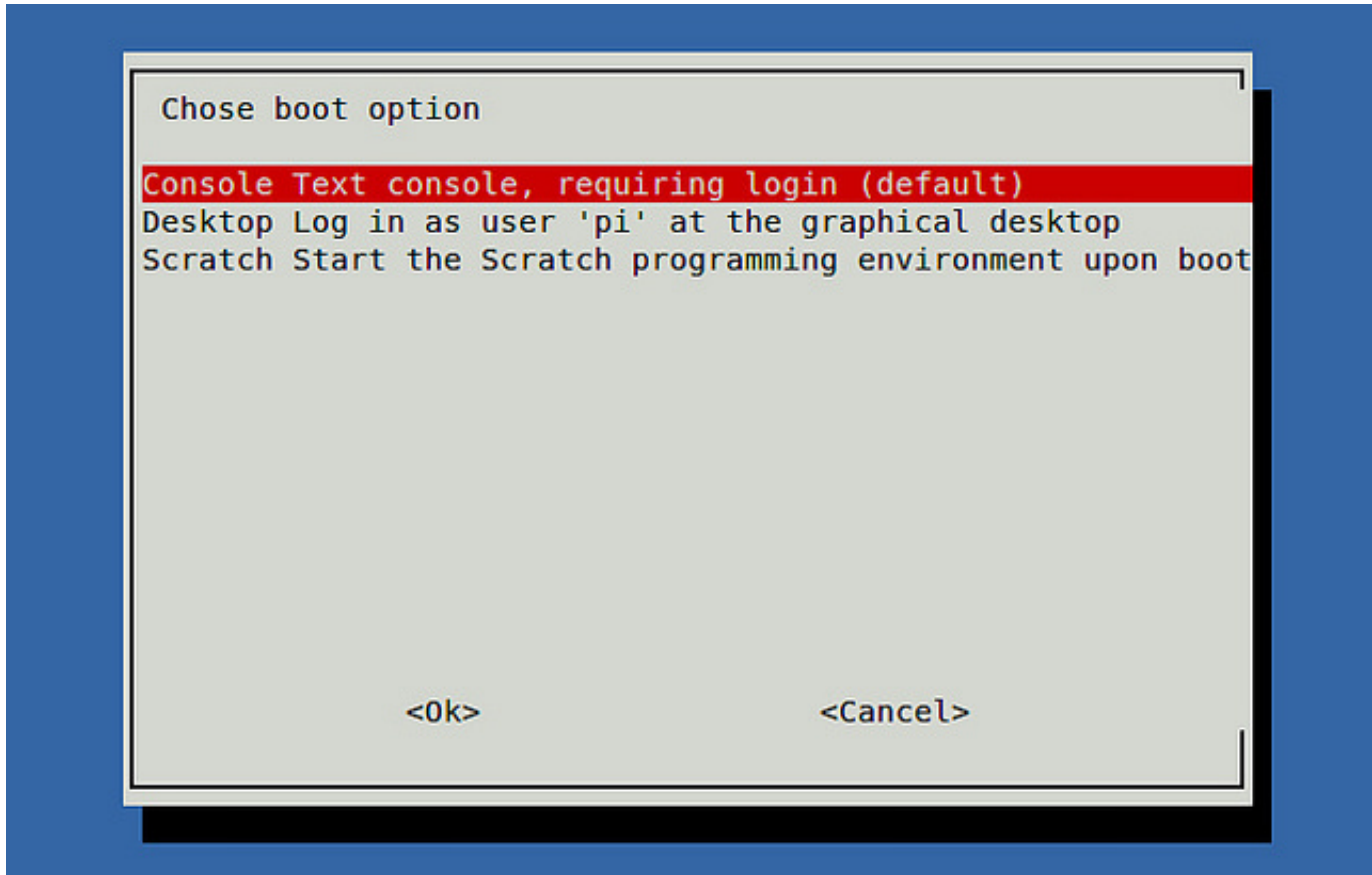
Select text console login option.

## Ask Xmodulo

Find answers to commonly asked Linux questions

<http://ask.xmodulo.com>

---



Finally, press key to move the cursor to Finish, and quit the tool. When prompted to reboot, choose YES to reboot.