

How to plot a bar graph on Gnuplot

Author : Dan Nanni

Categories : [Graphics](#)

Tagged as : [gnuplot](#)

Question: How can I create a bar graph (bar chart) using Gnuplot?

A bar graph is a plot which visualizes data values using proportional-size bars. Bar charts are useful when you want to compare multiple items among different categories. As you can imagine, they are much more effective than a table of numerical data.

Here is **how to draw a bar graph on Gnuplot**.

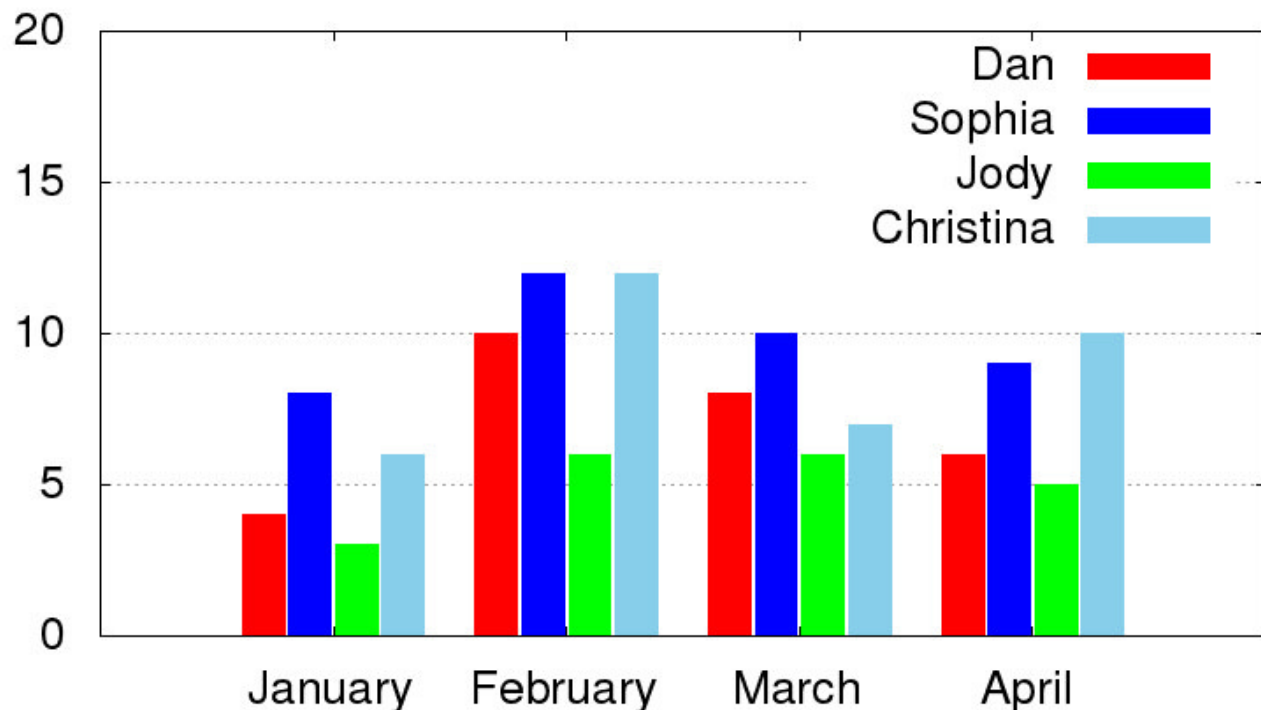
Assume that you have the following data file, from which you want to create a bar graph.

#	Dan	Sophia	Jody	Christina	January	4	8	3
6	February	10	12	6	12	March	8	10
6	7	April	6	9	5	10		

The following Gnuplot script generates a bar graph using the above data file.

```
set terminal png size 800,500 enhanced font "Helvetica,20" set output 'output.png'
red = "#FF0000"; green = "#00FF00"; blue = "#0000FF"; skyblue = "#87CEEB";
set yrange [0:20] set style data histogram set style histogram cluster gap 1
set style fill solid set boxwidth 0.9 set xtics format "" set grid ytics
set title "A Sample Bar Chart" plot "bar.dat" using 2:xtic(1) title "Dan" linecolor rgb red, \
'' using 3 title "Sophia" linecolor rgb blue, \
'' using 4 title "Jody" linecolor rgb green, \
'' using 5 title "Christina" linecolor rgb skyblue
```

A Sample Bar Chart



If you want to plot a bar graph in black-and-white patterns, use the following Gnuplot script instead.

```
set terminal png size 800,500 enhanced font "Helvetica,20" set output 'output2.png'
set yrange [0:20] set style line 2 lc rgb 'black' lt 1 lw 1 set style data histogram
set style histogram cluster gap 1 set style fill pattern border -1 set boxwidth 0.9
set xtics format "" set grid ytics set title "A Sample Bar Chart"
plot "bar.dat" using 2:xtic(1) title "Dan" ls 2, \
    '' using 3 title "Sophia" ls 2, \
    '' using 4 title "Jody" ls 2, \
    '' using 5 title "Christina" ls 2
```

A Sample Bar Chart

